

## **CLARIFICATION no. 5**

**Procurement no. OP/D/05/15**

**Published on February 4, 2016**

Regarding the request for additional clarification of the tender documents for the procurement no. OP/D/05/15 - Procurement of furniture and equipment for the first group of schools within „School Modernisation Programme“ – Lot 1, we submit the following answers:

### **1. BIDDERS QUESTION:**

Position is 1.16. - For which device it is requested to submit certificate and do we need to submit it within our bid.

What are dimensions of the tub and of what material it should be made?

### **ANSWER:**

Certificate is required for each item which specification states that it is necessary to submit a certificate. Certificate is not necessary to submit within the bid, but it is required to submit it during delivery of items which specification states that it is necessary to submit a certificate. It is a tub made of stainless steel, dimensions 38x38cm.

### **2. BIDDERS QUESTION:**

Items 1.11, 1.17 and 1.18 - What is tub depth and of which material it should be made?

### **ANSWER:**

It is a tub made of stainless steel, dimensions 38x38cm.

### **3. BIDDERS QUESTION:**

Item 1.12 - What are dimensions of the tub and of which material it should be made?

### **ANSWER:**

It is a tub made of stainless steel, dimensions 40x40cm.

### **4. BIDDERS QUESTION:**

Item 1.14 - What is the thickness of the compact material? Instead of compact material can it be another material e.g. plywood with ultrapast foil?

### **ANSWER:**

You may offer desk with top made of plywood 28mm thick, coated with ultrapast foil or foil resistant to chemicals.

### **5. BIDDERS QUESTION:**

Item 1.19, 1.20 and 1.21 - Can you provide a sketch or a detailed description for these items? What is it meant by construction: metal/univer?

### **ANSWER:**

Metal/chipboard construction involves a combination of metal and chipboard lined with acid-resistant material.

## **6. BIDDERS QUESTION:**

Items 1.22 and 1.23 - Can you provide a sketch or a detailed description for these items?  
What is it meant by construction: metal/univer? What are dimensions of the sink and of which material it should be made?

## **ANSWER:**

Metal/chipboard construction involves a combination of metal and chipboard lined with acid-resistant material. Sink is not needed for item 1.23.

## **7. BIDDERS QUESTION:**

Items 1.40, 1.41, 1.45, 1.46, 1.47, 1.48 - What are the width, depth and height of the closet (shelves). Can you provide a sketch or a detailed description? Does wooden mean chipboard? Does it have plinth or legs?

## **ANSWER:**

The answer is yes. Wooden means chipboard, where it is applicable.

Item 1.40 - Closet with plinth, height 105 cm, width 80 cm and depth 40 cm.

Item 1.41 - Closet with plinth, height 105 cm, width 80 cm and depth 40 cm. Drawing attached.

Position is 1.45 - Shelf for library, one-sided, 200x85x35 cm.

Position is 1.46 - Shelf for library, double-sided, 200x85x55 cm.

Position is 1.47 - Cabinet for 100 keys, height 80 cm, width 60 cm and depth 14 cm.

Position is 1.48 - Closet with 3 shelves that are closed with a sliding door, height 200 cm.

## **8. BIDDERS QUESTION:**

Item 1.53 Wooden wardrobe cabinet - What are the width, depth and, height? What is meant by "wooden" and what by "rounded edges"? Can you provide a sketch or drawing?

## **ANSWER:**

It is a narrow cabinet for the locker room, width 30 cm, height 150 cm and depth 50 cm.

## **9. BIDDERS QUESTION:**

2.6 Exhibition board – standing – What are the width and height? What are dimensions of board and stand?

Of what material stand should be made and what does it look like? Can you provide a sketch, picture or drawing?

## **ANSWER:**

Exhibition board - standing, dimensions: width 95cm and height 180cm - with stand. The thickness is 4 cm. The frame is made of laminated wood - natural beech filled with plywood, ABS edge tape d = 2mm, white color. Drawing attached.

## **10. BIDDERS QUESTION:**

2.7. Exhibition board - movable with wheels - What are the width and height? What are dimensions of the boards and stand? Is the stand metal? Can you provide a sketch, picture, or drawing?

**ANSWER:**

Exhibition panel - movable with wheels, dimensions: width 80cm and height 120cm - with stand. The thickness is 4 cm. Frame: width 5 cm and a height 50 cm, with wheels. Drawing attached.

**11. BIDDERS QUESTION:**

2.8. Wall display board – Does dimension 42 mm refer to depth of the wall panel?

**ANSWER:**

Dimension of the frame is 42mm and it is made of laminate wood.

**12. BIDDERS QUESTION:**

2.9. Cork board panel – what do you mean by wooden frame. What are dimensions?

**ANSWER:**

Chipboard frame, panel dimensions 90x120cm.

**13. BIDDERS QUESTION:**

4.11. Professional vacuum cleaner - a more detailed description?

**ANSWER:**

Suitable for deep cleaning of floors such as tile floors, deck floors and parquet floors, with tools for cleaning of upholstered furniture, with a dust bin and washable filter. Efficiency class for cleaning of hard surfaces: A. Efficiency class for carpet cleaning: C. Strength 1600 - 1800 W.

**14. BIDDERS QUESTION:**

4.16 Toilet name plate – Made of which material? What kind of engraving?

**ANSWER:**

Made of plastic with double-layer engraving with gray background and black Latin characters.

**15. BIDDERS QUESTION:**

4.17. School name sign – Is it engraved or made of glued foil?

**ANSWER:**

It is made of glued foil.

Chairman of the Procurement Commission

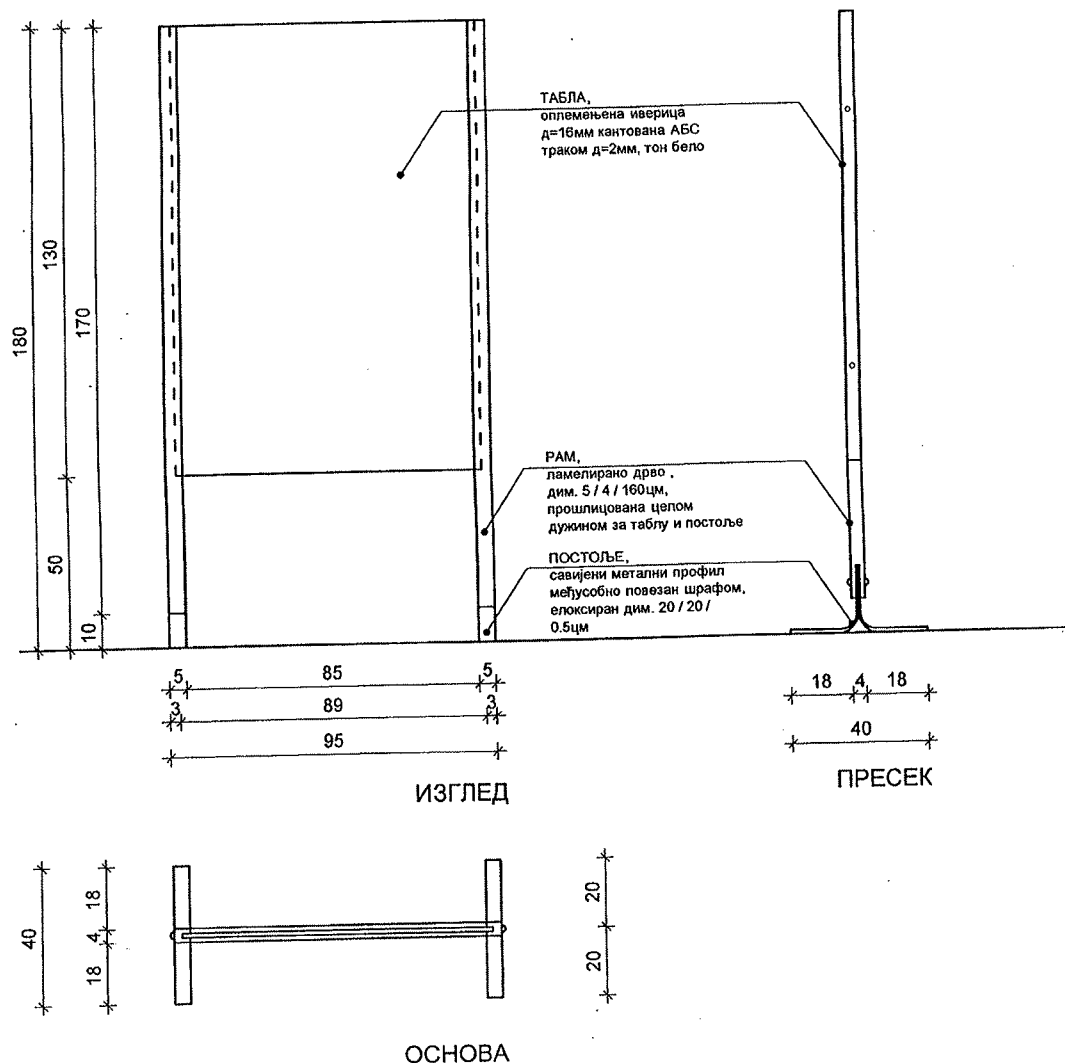
  
Tamara Popović

03. - 3.3	ДИМЕНЗИЈА 95 / 180 / 4цм	
фра - 3.3	ИЗЛОЖБЕНИ ПАНО - СТОЈЕЋИ	Р. 1:20
ПОСТОР	ХОЛ	

# ОПИС:

Пано стојећи.

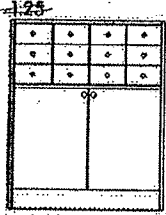
Рам је од ламелираног дрвета - натур буква са испуном од оплеменење иверице,  
кантоване АБС траком д=2 мм беле боје.



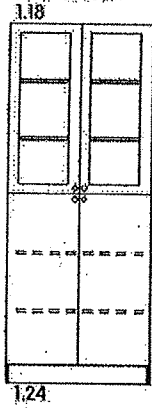
POZICIJA

1.41 ↓

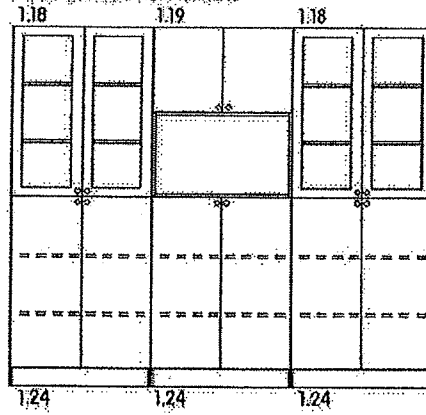
ORMAN DONJI  
SA FIJOKAMA ZA KARTICE  
- BIBLIOTEKA



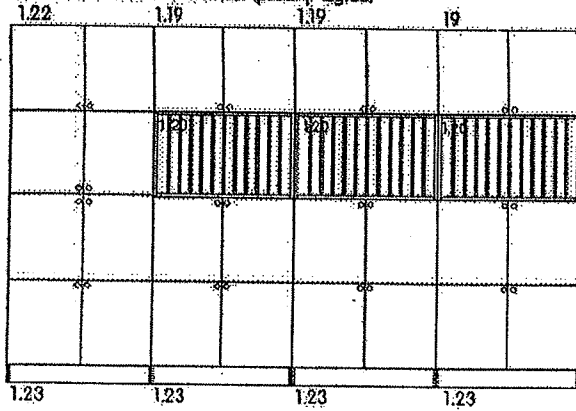
SEMA ORMANA  
U BIBLIOTECI



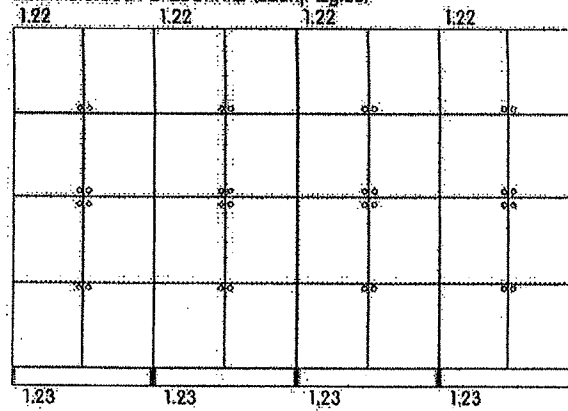
SEMA ORMANA U PRIPREMI



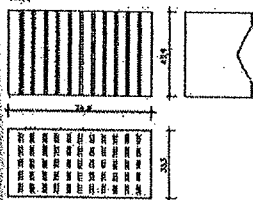
SEMA ORMANA U ZBORNICI (prednji izgled)



SEMA ORMANA U ZBORNICI (zadnji izgled)



ODDAJAK ZA 12 DNEVNICA  
1.38



POZICIJA  
1.38

